

**Major**  
Emergency departments overview

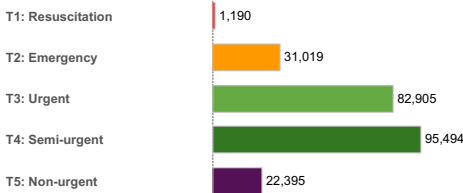
[View range of results](#)  
Time to start treatment

[View range of results](#)  
Time to leaving the emergency

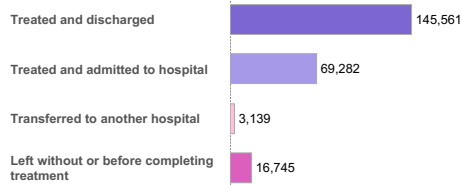
Emergency department presentations: Jan-Mar 2019 [Click for details](#)



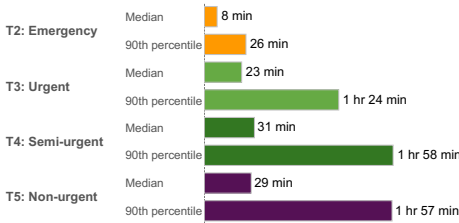
Emergency department presentations by triage category: Jan-Mar 2019 [Click for details](#)



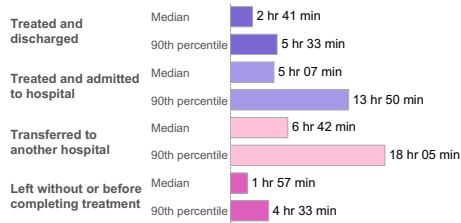
Emergency department presentations by mode of separation: Jan-Mar 2019 [Click for details](#)



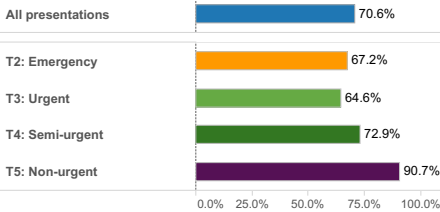
Time from presentation to starting treatment by triage category: Jan-Mar 2019 [Click for details](#)



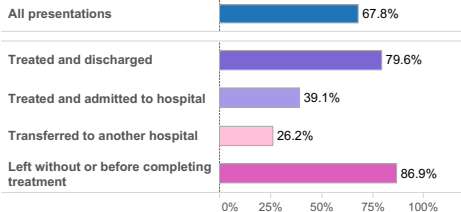
Time from presentation to leaving the emergency department by mode of separation: Jan-Mar 2019 [Click for details](#)



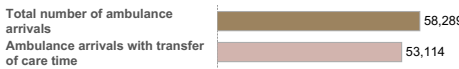
Percent of patients starting treatment on time<sup>1</sup>: Jan-Mar 2019 [Click for details](#)



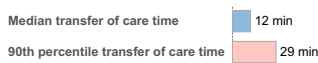
Percent of patients leaving the emergency department within four hours: Jan-Mar 2019 [Click for details](#)



Ambulance arrivals: Jan-Mar 2019 [Click for details](#)



Transfer of care time: Jan-Mar 2019 [Click for details](#)



Percent of arrivals with transfer of care time within 30 minutes [Click for details](#)



How to use this dashboard:

Make your selection from the menus at the left hand side of the page.  
Choose a topic; select either NSW, hospital, local health district, or peer group; and specify a time period. Then press 'Submit' to make the change.

More detailed information on each indicator, including trends over time, is available via the 'click for details' link.

On this dashboard:

Emergency department overview information is reported for the selected hospital, local health district or peer group.

**Emergency presentations** are those that have a triage category and are coded as emergency presentations or unplanned return visits or disaster.

**Transfer of care time** refers to the period between arrival of patients at the ED by ambulance and the transfer of responsibility for their care from paramedics to ED staff in ED treatment zone. **Transfer of care time** can only be calculated for records that can be matched. For some smaller NSW hospitals, transfer of care times reported in Hospital Quarterly are being assessed for data quality and results should be interpreted with caution.

Caution is advised when interpreting performance before and after transition to a new information system.

Notes:

<sup>1</sup> The **percent of patients starting treatment on time** is calculated as the percent of patients with waiting times less than or equal to the recommended maximum waiting time in the Australasian Triage Scale: T2 Emergency: 10 minutes; T3 Urgent: 30 minutes; T4 Semi-urgent: 60 minutes; T5 Non-urgent: 120 minutes.

(\*\*) Caution - Transfer of care could not be calculated for more than 30% of records  
<5 or (\*) The result is suppressed due to small numbers and to protect patient privacy.

Figures in Healthcare Observer may differ from those in published reports and information products due to subsequent changes in data coverage and analytic methods, and updates to databases. At any time, the most up-to-date data are available in Healthcare Observer and supersede all previously published figures.

Sources: ED data from Health Information Exchange, NSW Health (extracted 1 May 2019).  
Transfer of care data from Transfer of Care Reporting System (extracted 1 May 2019).